



PREMIUM DF-R101 / DF-H201

Art Creation, Metal to Rubber Joining
Marble Granite Fixing, Reeds, Wood Industries

Features

- Super strength epoxy adhesive
- Medium curing system

Benefits

- Long open time
- Electrically Insulating
- High Shear and Peel Strength

Mixing Ratio

- 100 : 80 by weight
- 100 : 100 by volume

SKU - Pack Size

36g, 90g, 180g, 450g, 900g, 1.8kg, 9kg, 90kg



MULTI PURPOSE DF-R104 / DF-H204

Marble Joining, Concrete, Ceramics,
Artificially Jewellery

Features

- Super strength epoxy adhesive
- Medium curing system

Benefits

- Water resistant
- Heat resistant
- High shear strength

Mixing Ratio

- 100 : 80 by weight
- 100 : 100 by volume

SKU - Pack Size

1.8kg, 9kg, 90kg



SS DF-R135 / DF-H235

Civil Industries, Sports Goods, Wood,
Industries, Handicraft, Marble and Granite
Joints

Features

- Super strength epoxy adhesive
- Medium curing system

Benefits

- Cost Effective System
- Can bond almost any substrates
- No shrinkage

Mixing Ratio

- 100 : 80 by weight
- 100 : 100 by volume

SKU - Pack Size

36g, 90g, 180g, 450g, 900g, 1.8kg, 9kg, 90kg



BL DF-R155 / DF-H255

Bangles and Imitation Industries

Features

- Slow Curing System

Benefits

- Cost Effective System

Mixing Ratio

- 100 : 80 by weight
- 100 : 100 by volume

SKU - Pack Size

1.8kg, 9kg, 90kg



BL-F DF-R160 / DF-H260

Bangles and Imitation Industries

Features

- Slow Curing System

Benefits

- Cost Effective System

Mixing Ratio

- 100 : 80 by weight
- 100 : 100 by volume

SKU - Pack Size

1.8kg, 9kg, 90kg



DIAMOND DF-R102 / DF-H202

Kitchen Tile Fixing, Underwater Tile Fixing
Marble Joints, Vertical Cladding, Lift Passage
Tile Fixing

Features

- 15-20 Minute Setting Time
- High Strength

Benefits

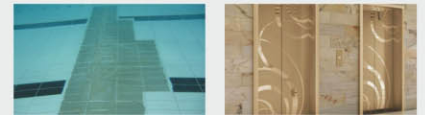
- No shrinkage

Mixing Ratio

- 100 : 50 by weight
- 100 : 50 by volume

SKU - Pack Size

1.5kg



WOOD FILLO DF-R111 / DF-H211

Furniture, Gap Filling, Potting, Handicrafts
Wood Working

Features

- Filled system

Benefits

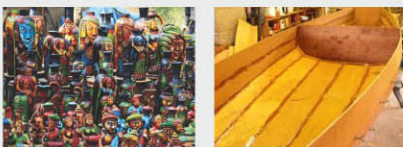
- Cost effective system
- Prefilled Epoxy

Mixing Ratio

- 100 : 80 by weight
- 100 : 100 by volume

SKU - Pack Size

1.8kg, 9kg



CLEAR FIX DF-R115 / DF-H215

Imitation Jewelry

Features

- Transparent epoxy
- Medium curing system

Benefits

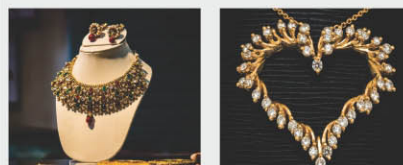
- Extremely good for transparent bonding

Mixing Ratio

- 100 : 80 by weight
- 100 : 100 by volume

SKU - Pack Size

450g, 1.8kg, 9kg



GOLD REEDS DF-R103 / DF-H203

Reeds, Speakers, Night Lamp, Handicraft

Features

- Medium curing system

Benefits

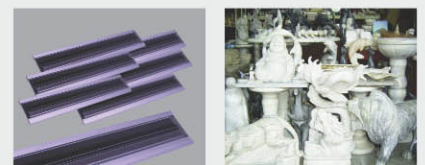
- High Bonding Strength
- No Shrinkage

Mixing Ratio

- 100 : 80 by weight
- 100 : 100 by volume

SKU - Pack Size

1.8kg and 9kg





ROAD REFLECTORS KIT DF-R137 / DF-H237 / SAND

Reflectors Industries

Features

- Super strength epoxy adhesive
- Medium curing system

Benefits

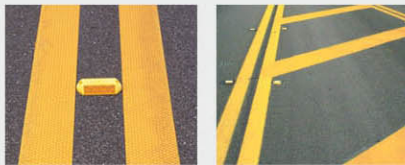
- Can bond almost any substrates
- No shrinkage

Mixing Ratio

- 1 : 0.5 : 3 by weight

SKU - Pack Size

1kg Resin, 0.5kg Hardner, 3Kg Sand



FIX SEAL-GP & FIX SEAL-FAST

FIX SEAL-GP

Features

- FIX SEAL is a two Component System
- On curing exhibits tough & long lasting bonding

Benefits

- Rock Hard Sealing • Moldable
- Bond withstand temperature upto 120°C

SKU - Pack Size

- 100g and 1kg

FIX SEAL-FAST

Features

- FIX SEAL is a two Component System
- On curing exhibits tough & long lasting bonding

Benefits

- Rock Hard Sealing • Moldable
- Bond withstand temperature upto 120°C
- Idle for emergency repair due to quick setting time

SKU - Pack Size

- 25g, 50g, 100g, 250g and 1kg

FIX SEAL-WHITE

Industrial, Electrical, Automobile, House Hold

Features

- Moldable •Ease of mixing
- Cures to a hard mass
- Can be Shaped, Drilled, Filled, Sanded, and Painted upon.

Benefits

- Useful for Sealing, Joining, Repairing and for insulating ferrous & non ferrous Metal.

SKU - Pack Size

- 100 g and 1Kg



CLER & CLEAR

Glass to glass, Construction, Civil Application, Marbel

Features

- Fast Setting
- Transparent bonding

Benefits

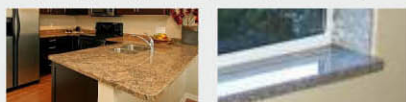
- Used in glass to glass bonding
- Can bond all most any Substrates

Mixing Ratio

- 100 : 100 by weight
- 100 : 100 by volume

SKU - Pack Size

12g, 36g, 90g, 180g, 500g and 1kg



I CARD COATING DF-R149 / DF-H244

I card coating

Features

- Clear coat
- Medium curing system

Benefits

- Easy to apply

Mixing Ratio

- 100 : 50 by weight
- 2 : 1 by volume

SKU - Pack Size

1.5kg and 7.5kg



D+ Grout

Floors, Walls, Interior, Dry Areas, Exterior, Dry Areas, Wet Areas, Works tops, Showers Swimming Pools, Heavily Toughticked floors

Features

- Aseptic • Durable Joints • High Strength
- Abrasion Resistant • Hygienic

Benefits

- High bond strength
- Cost effective system

Mixing Ratio

- Part A : 2 Parts by Weight
- Part B : 1 Parts by Weight

The Two parts are pre-batched in their respective containers.

SKU - Pack Size

1kg, 5kg

STONE CARE PRODUCT

D FIX VISCO DF-R110 / DF-H210

Features

- Transparent Coating

Benefits

- Slow curing time

Mixing Ratio : 100 : 50 by weight

SKU - Pack Size : 1.5kg and 7.5kg

D FIX MARBLE COAT- HP DF R110 (HP) / DF-H210

Features

- Transparent Coating

Benefits

- Slow curing time

Mixing Ratio : 100 : 50 by weight

SKU - Pack Size : 1.5kg and 7.5kg

D FIX CLEAR COAT DF R136 / DF-H236

Features

- Transparent Coating

Benefits

- Slow curing time

Mixing Ratio : 100 : 45 by weight

SKU - Pack Size : 7.5kg

D FIX HIGH GLOW DF-R161 / DF-H261

Features

- Transparent Coating

Benefits

- Slow curing time

Mixing Ratio : 100 : 30 by weight

SKU - Pack Size : 1.3kg and 6.5kg



PU COLOUR - INTERIOR & EXTERIOR

PU COLOUR - INTERIOR

WOOD PU : MATT & GLOSSY, GLASS COAT PU

Mixing Ratio

- 80 : 20 by weight • 4 : 1 by volume

SKU - Pack Size:

1 Ltr & 4 Ltr

Application areas

Furniture, Indoor Decoration, Glass, Automobiles

PU COLOUR - EXTERIOR

INDUSTRIAL PU (METAL)

Mixing Ratio

- 3:1

SKU - Pack Size:

1 Ltr & 4 Ltr

Application areas

Outdoor Furniture, Outdoor Decoration, Automobile, Machineries.

CRACK & FIX DF-R105 / DF-H205

Old to New Concrete Bonding Injection Grouting, Mortar Repair, Civil Application

Features

- Medium viscosity
- Medium curing system

Benefits

- High bond strength
- Cost effective system

Mixing Ratio

- 100 : 50 by weight
- 2 : 1 by volume

SKU - Pack Size

1.5kg, 7.5kg, 45kg



Other Products

ADHESIVE RANGE

- **Brush D Bond** DF-R151 / DF-H251

DFIX PIGMENTS & PASTES

- **D FIX D+ Epoxy Pigment**

FRP COMPOSITE

- **Accelerator** DF-R108 / DF-H208
- DF-R127 / DF-H234
- DF-R122 / DF-H220 / DF-H230
- **Cold Curing** DF-R122 / DF-H206
- DF-R161 / DF-H261

PU FLOOR COATING

- **Pu Coving Kit**
- **Pu Screeding Kit**
- **Pu Top Coat Kit**

EPOXY FLOORING

- **D+ Floor-prime**
- **D+ Floor- UI**
- **D+ Floor- SI**
- **D+ Floor- Sf-roll Coat**
- **D+ Floor- Deck Coat**
- **D+ Garage Floor**
- **D+ Epoxy Coving Kit**

MAINTENANCE & REPAIRING

- **White PU Terrace Coat**
- **Maintenance Epoxy Range**

POTTING COMPOUNDS

- **D Fix Potting Epoxy Compounds**
- **D Fix Pu Potting Compounds**

EPOXY TRANSFORMER

- **Transformer Grade**



Mktd By: **D Fix Enterprise**

506-Parshwanath Business Park, Prahladnagar,
Ahmedabad. • Phone: +91 7572963387

Email: info@dfix.co.in • web: www.dfix.co.in